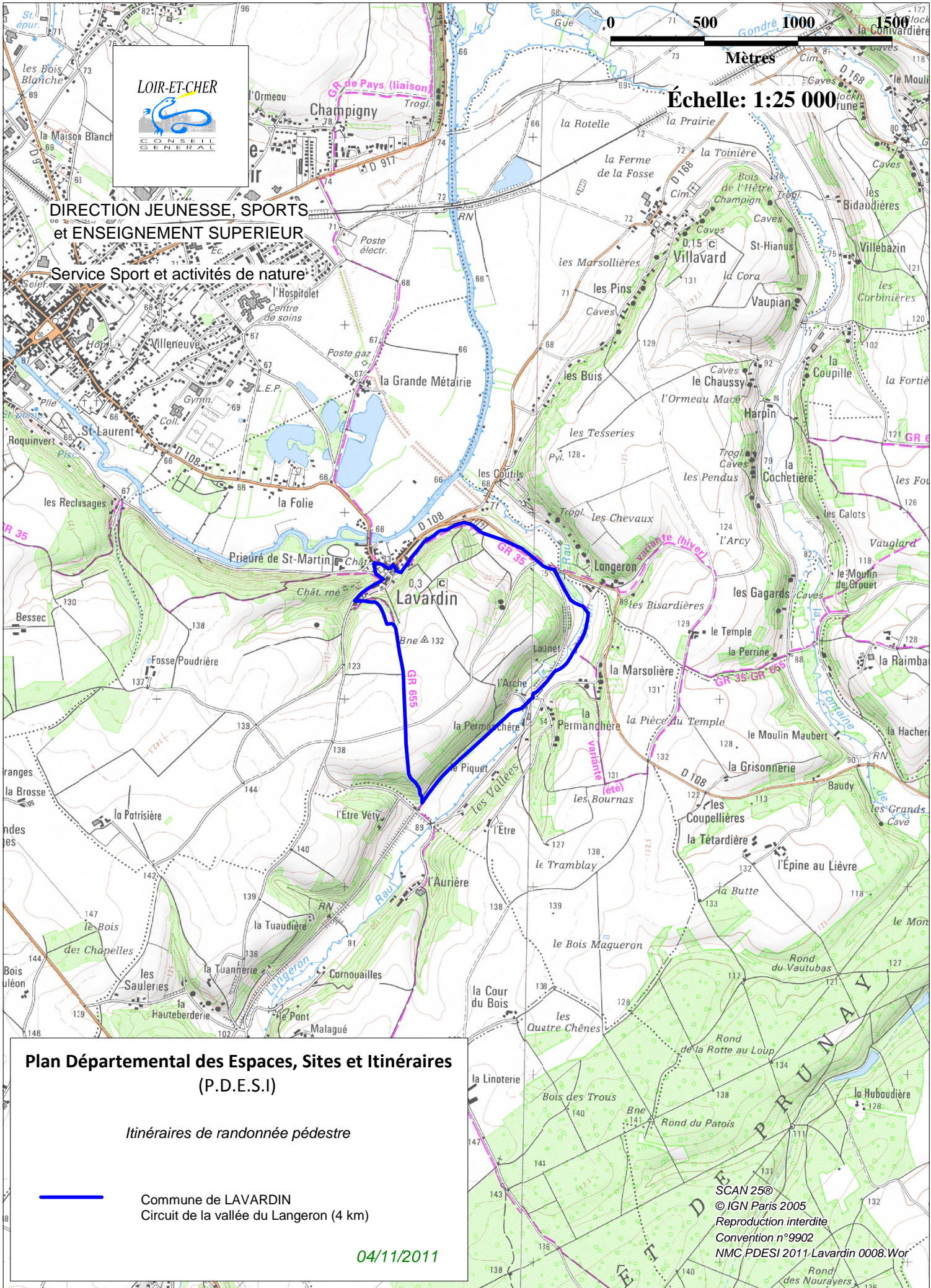
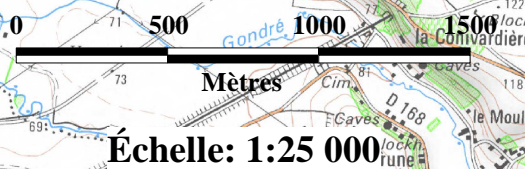


LOIR-ET-CHER





CONSEIL  
GENERAL

DIRECTION JEUNESSE, SPORTS  
et ENSEIGNEMENT SUPERIEUR  
Service Sport et activités de nature



**Plan Départemental des Espaces, Sites et Itinéraires  
(P.D.E.S.I)**

*Itinéraires de randonnée pédestre*

-  Commune de LAVARDIN
-  Circuit de la vallée du Langeron (4 km)

04/11/2011

SCAN 25®  
© IGN Paris 2005  
Reproduction interdite  
Convention n°9902  
NMC/PDESI 2011.Lavardin 0008.Wor